

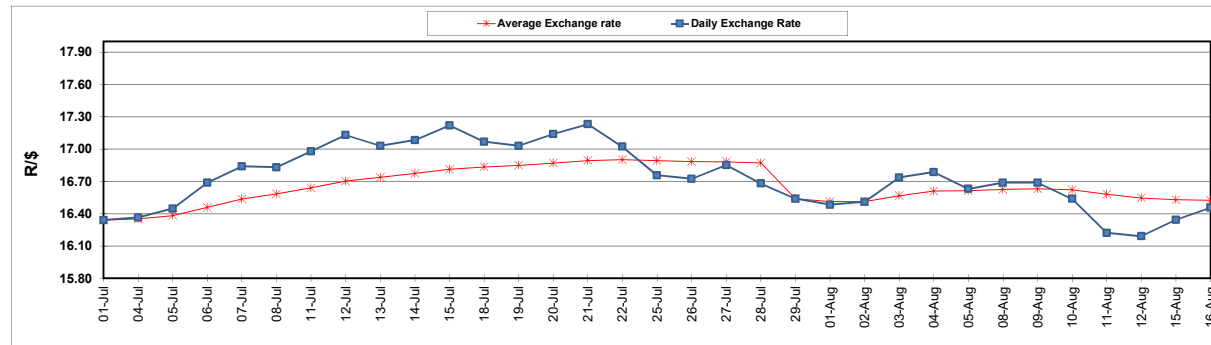
	PETROL 95 ULP	PETROL 93 ULP & LRP	DIESEL 0.05%	DIESEL 0.005%	ILL. PAR.
GAUTENG PUMP PRICE (SA c/l) AS FROM 03/08/2022	2,542.000	2,499.000	-	-	-
WHOLESALE PRICE (SA c/l) AS FROM 03/08/2022	-	-	2,452.440	2,461.840	1,842.288
SINGLE NATIONAL MAXIMUM RETAIL PRICE	-	-	-	-	2,431.000
BASIC FUEL PRICE - 16/08/2022 (SA c/l)	1,237.344	1,212.266	1,473.775	1,495.466	1,490.849
PRESS RELEASE CONTRIBUTION TO BFP 03/08/2022 - 16/08/2022 (SA c/l)	1,482.410	1,439.410	1,600.630	1,610.030	1,624.128
UNIT OVER/(UNDER) RECOVERY - 16/08/2022 (SA c/l)	245.066	227.144	126.855	114.564	133.279
AVERAGE BASIC FUEL PRICE 29/07/2022 - 16/08/2022	1,274.364	1,247.338	1,421.305	1,438.014	1,472.210
AVERAGE UNIT OVER/(UNDER) RECOVERY 29/07/2022 - 16/08/2022	255.815	239.841	216.940	210.324	185.149

ANALYSIS MOVEMENT OF AVERAGE OVER/(UNDER) RECOVERY

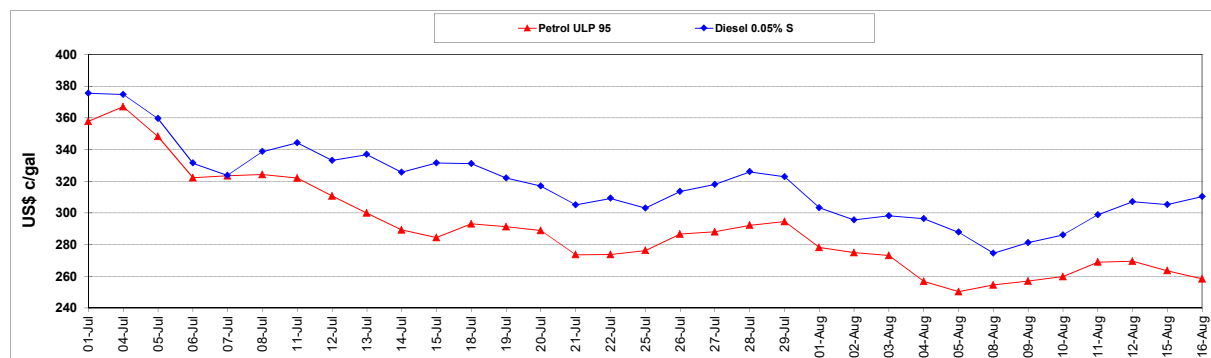
	PETROL 95	PETROL 93	DIESEL 0.05%	DIESEL 0.005%	ILL. PAR.
- MOVEMENT IN INTERNATIONAL PRODUCT PRICES	228.937	213.533	186.963	179.994	154.098
- MOVEMENT IN EXCHANGE RATE	26.878	26.308	29.977	30.330	31.051
AVERAGE UNIT OVER/(UNDER) RECOVERY 29/07/2022 - 16/08/2022	255.815	239.841	216.940	210.324	185.149

R/\$ EXCHANGE RATE - (R/\$16.4550 - 16/08/2022)

EXCHANGE RATE USED IN BASIC FUEL PRICE



INTERNATIONAL PRODUCT PRICES OF BASKET USED IN BASIC FUEL PRICE



BASIC FUEL PRICE IN SA CENTS PER LITRE

